



World Autism Awareness

United States | Canada | United Kingdom | Australia | [Hong Kong](#) | Korea | Singapore | Philippines | Kuwait | Beijing

Components of an Effective ABA Program

Catherine Tam



Not all ABA is alike!



Protocol-driven ABA



Autism Partnership
Method

Autism Partnership Method

- Behaviourally based interventions
- Interventionists conduct in-the-moment analysis
- CLINICAL JUDGEMENT
- Sensitivity to the whole family' s needs and the culture that is part of the family' s life



Staff training - Induction training

	Protocol-driven ABA	APM
Duration of induction training	2 to 5 days (10 to 40 hours)	4 months
Major format of training	Didactics and observation	Hands-on training with student
Evaluation	Time-based, multiple-choice questions	Performance-based

Staff training - Supervisor

	Protocol-driven ABA	APM
Duration of training	Around 2.5 years	5 years +
Major format of training	Coursework and supervised fieldwork (2000 hours)	Supervision, mentoring, weekly group training, monthly agency-wide training
Evaluation	Written examination	Performance-based

Staff training - Supervisors

Protocol-driven ABA



Qualifications

APM



Clinical skills

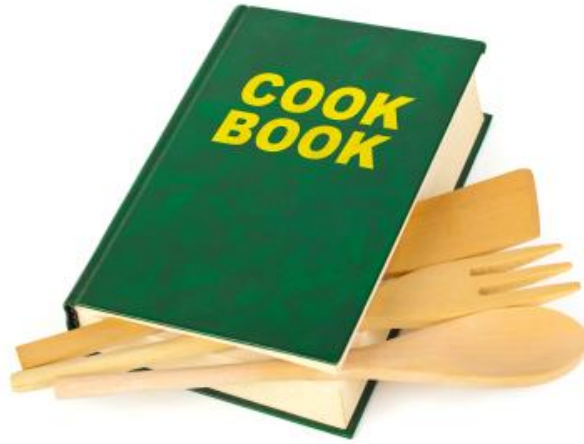
Clinical skills in supervisors



Decision-making - Intensity and consistency

	Protocol-driven ABA	APM
Recommendations	Consumer-based	Clinician-based and evidence-based
Intensity	Minimal intensity	Optimal intensity
Alternative treatments	Consumer's choice	Strongly advised against

Decision-making - Curriculum

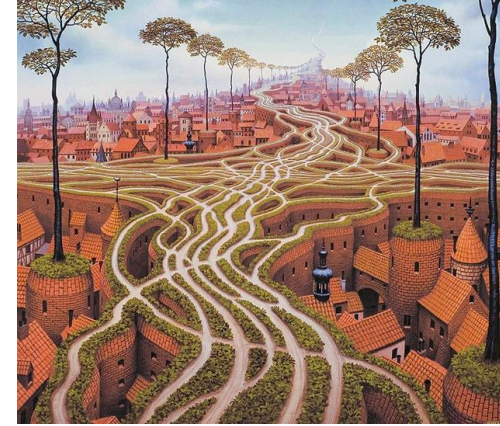


Protocol-driven ABA

ABLLS-R

VB-MAPP

Curriculum guides



APM

Highly individualised

Strengths and learning styles

Whole-child development

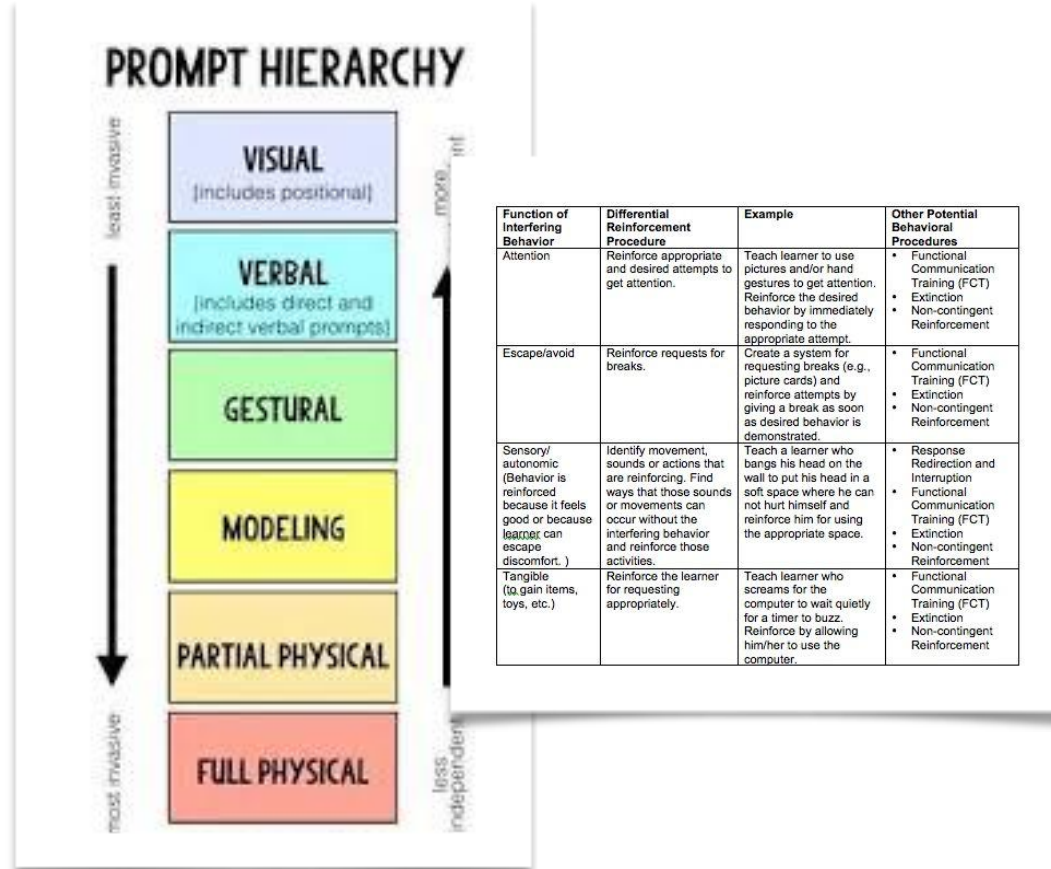
Focus on pivotal skills

Pivotal Skills

- Internal motivation
- Social interest
- Social engagement
- Attention
- Effort and persistence
- Thinking
- Independence



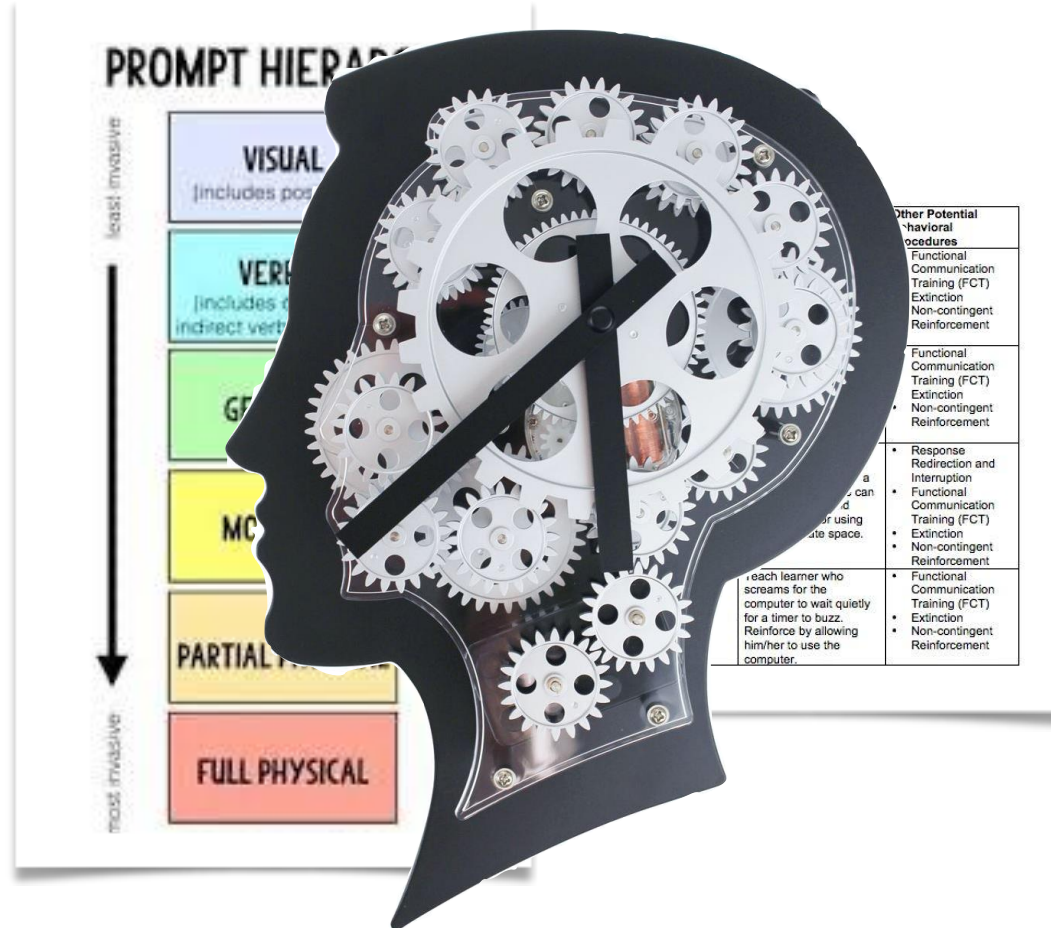
Decision-making - Treatment



- Protocol-driven
 - Prompt hierarchy
 - Prompting strategy
 - Schedule of reinforcement
 - Complexities of instructions

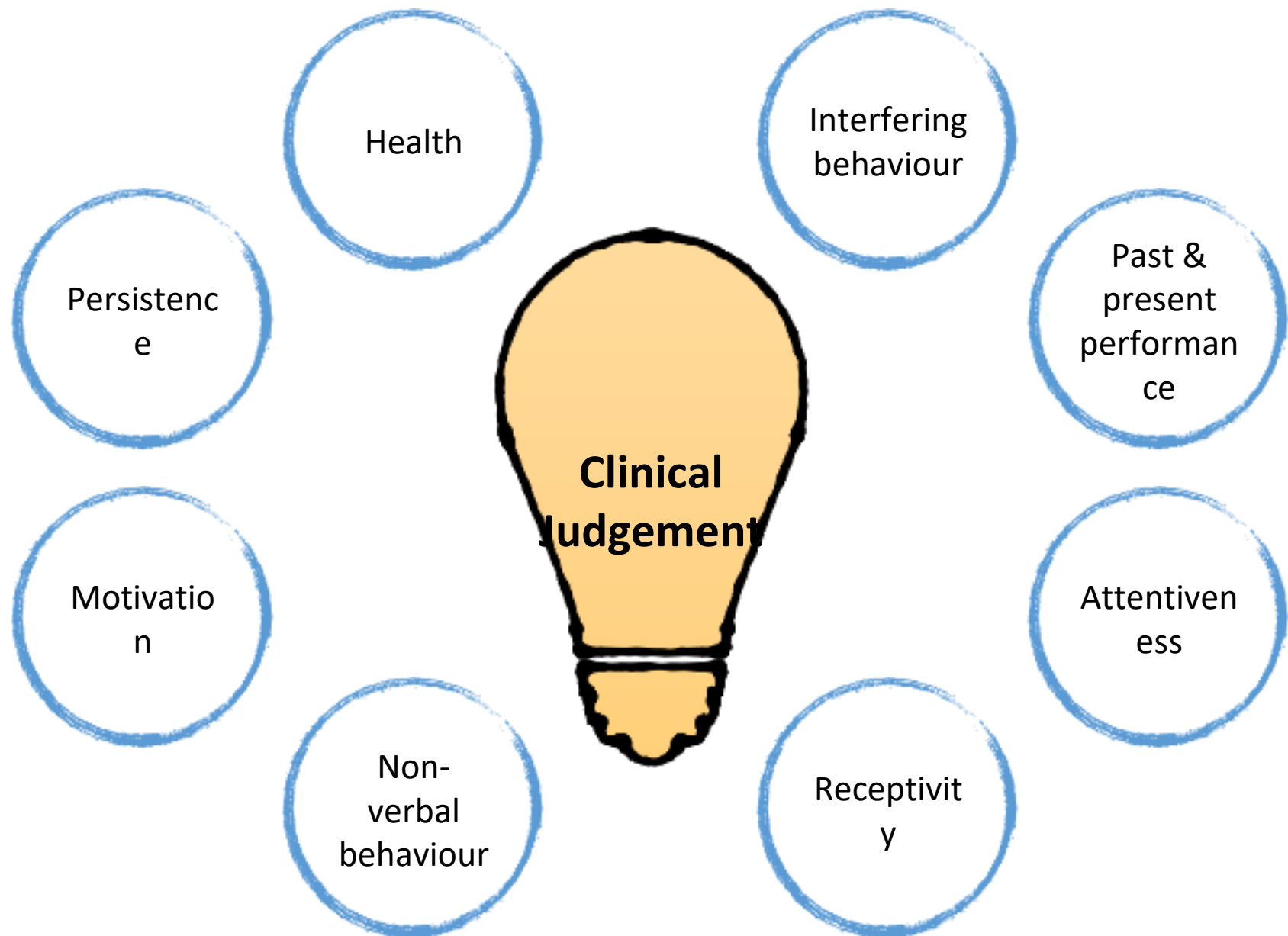
Protocol-driven ABA

Decision-making - Treatment



APM

- In-the-moment analysis to make clinical judgement
 - Prompt hierarchy
 - Prompting strategy
 - Schedule of reinforcement
 - Complexities of instructions



Components of treatment

	Protocol-driven ABA	APM
Reinforcement	Food and limited tangibles	Social, activities and engagements
Instructions	Robotic	Natural, engaging
Instructional formats	Discrete Trial Training	Discrete Trial Training Teaching Interaction Cool / Not Cool Continuous Teaching
Learner's responses	Passive	Active
Treatment Setting	Home-based	Clinic-based

Parental involvement

- Provide input about wishes and concerns
- Be equipped with knowledge and tools to navigate everyday life with their child
- Facilitate language, social, play and self-help at home
- Be a mom or dad!



